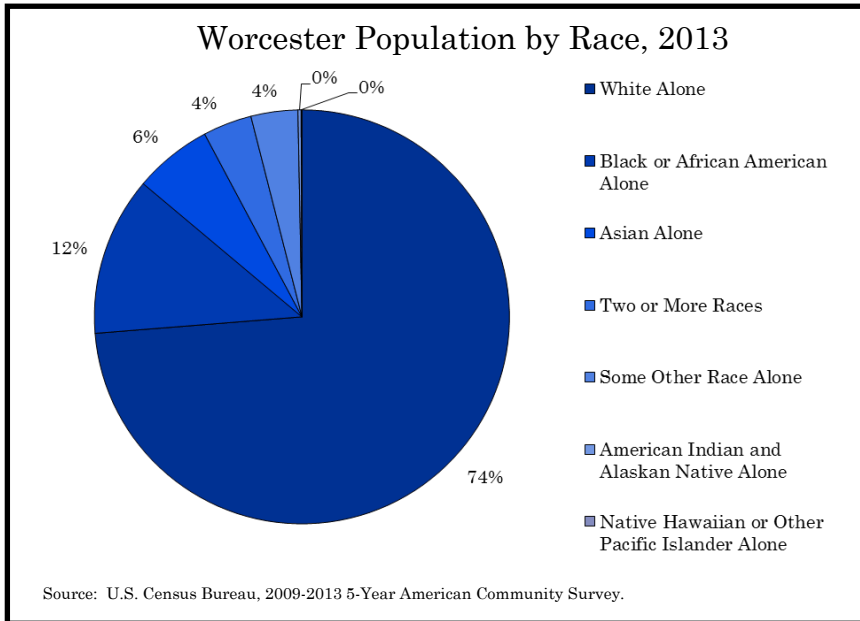




Bureau Brief—Community Dialogues on Race—Economic Development

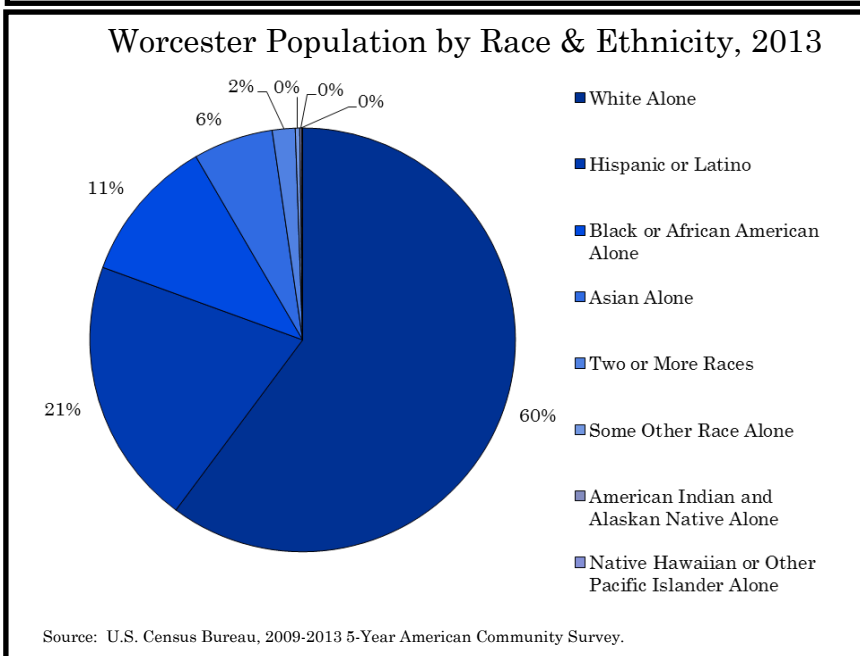
Research in the Public Interest



According to the U.S. Census Bureau, the City of Worcester has a population of 181,901 residents, making it the 129th largest city in the United States and the 2nd largest city in New England.

The U.S. Census Bureau tallies five categories of race: “American Indian or Alaska Native,” “Asian,” “Black or African American,” “Native Hawaiian or Other Pacific Islander,” and “White.” Hispanic origin is defined as ethnicity, rather than race, and persons defined as Hispanic or Latino can be of any race.

“**Worcester Population by Race, 2013**” illustrates Worcester’s racial composition according to the Census Bureau’s five racial categories. People of Hispanic origin fall into any one of the five categories.



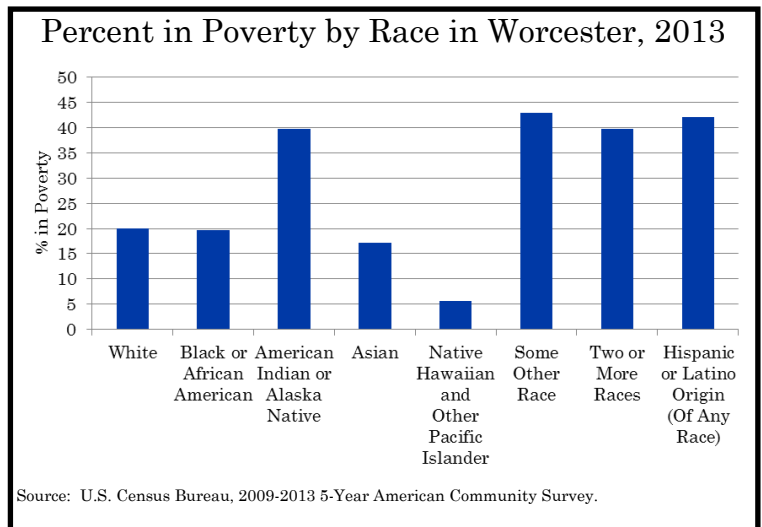
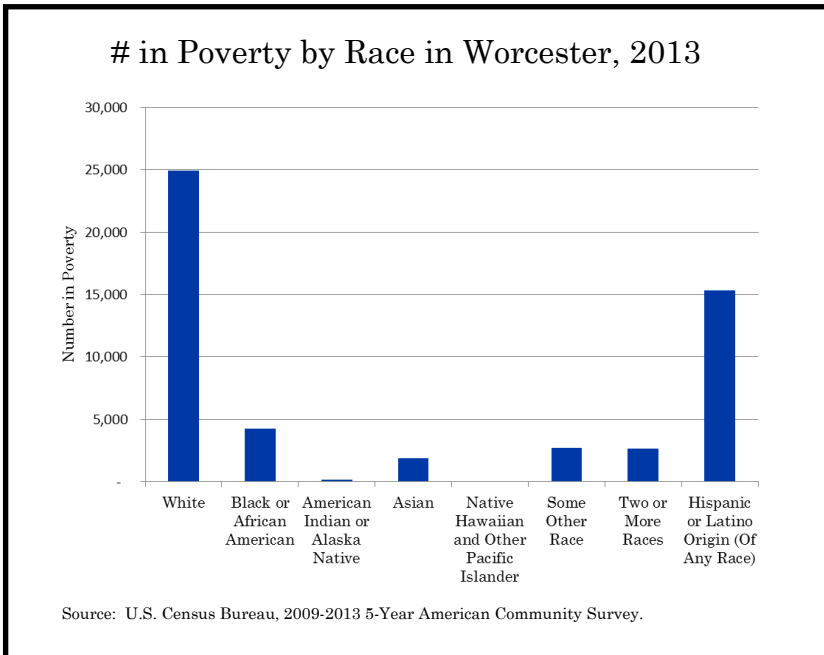
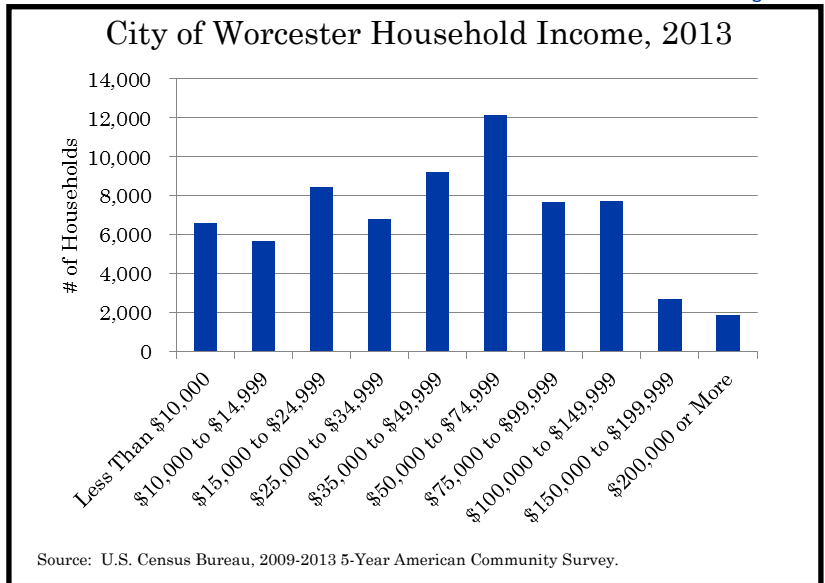
“**Worcester Population by Race & Ethnicity**” illustrates Worcester’s population by both race and ethnicity. It indicates that people who identify as Hispanic or Latino make up approximately 21% of Worcester’s population, however it does not account for their racial composition and therefore may undercount certain racial categories.

Worcester, Massachusetts	
Total # of Households (2013)	68,850
<i>Family Households</i>	57.8%
<i>Non-Family Households</i>	42.2%
<i>Households with Children under 18</i>	30.7%
Median Household Income (2013)	\$45,932
Average Household Size (2010)*	2.46
Average Family Size (2010)*	3.14

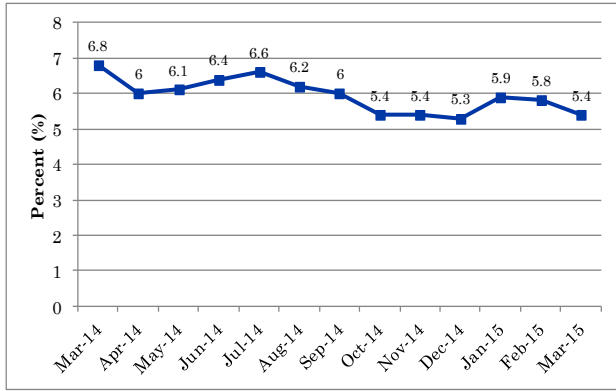
Source: U.S. Census Bureau, 2009-2013 5-Year American Community Survey. *U.S. Census Bureau, 2010 Census.

According to the U.S. Census Bureau, the median household income in Worcester is \$45,932. The median household income of Massachusetts is \$66,866 and the median household income of the United States is \$53,046.

According to the U.S. Department of Housing and Urban Development, the Worcester Area Median Family Income (which includes Worcester and surrounding towns) is \$79,600.



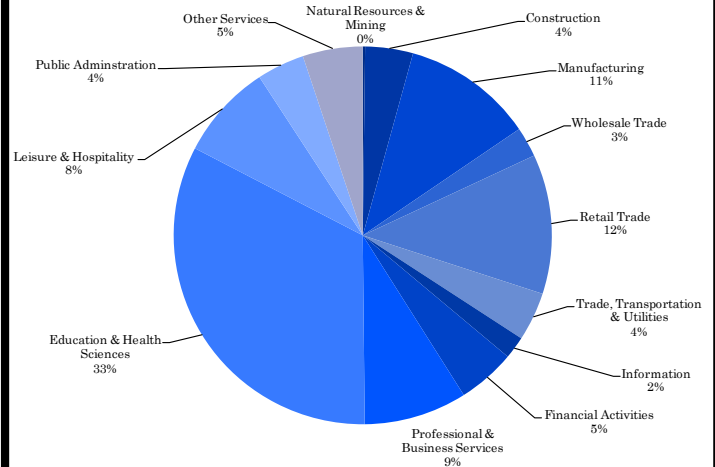
Worcester Metropolitan Statistical Area Unemployment Rate



Source: U.S. Bureau of Labor Statistics.

Source: U.S. Bureau of Labor Statistics. The current Worcester Metropolitan Statistical Area (MSA) unemployment rate is 5.4% (March 2015 Preliminary).

City of Worcester Employment, 2013



Source: U.S. Census Bureau, 2009-2013 5-Year American Community Survey.

Worcester Economic Indicators, 2014/2015	
Month	Worcester Economic Index
January 2014	102.6
February	102.9
March	103.3
April	103.6
May	104.1
June	104.6
July	105.2
August	105.5
September	105.6
October	105.7
November	105.8
December	106.1
January 2015	106.3
February	106.7
March	107.0

Source: Professor Thomas White, Assumption College

The quarterly Worcester Economic Indicators Report, developed by Thomas White, Chair of the Economics and Global Studies department at Assumption College, measures the health of the City of Worcester's economy using three variables: nonfarm payroll data, total household employment, and the unemployment rate. The base year is January 2001 (January 2001 = 100).

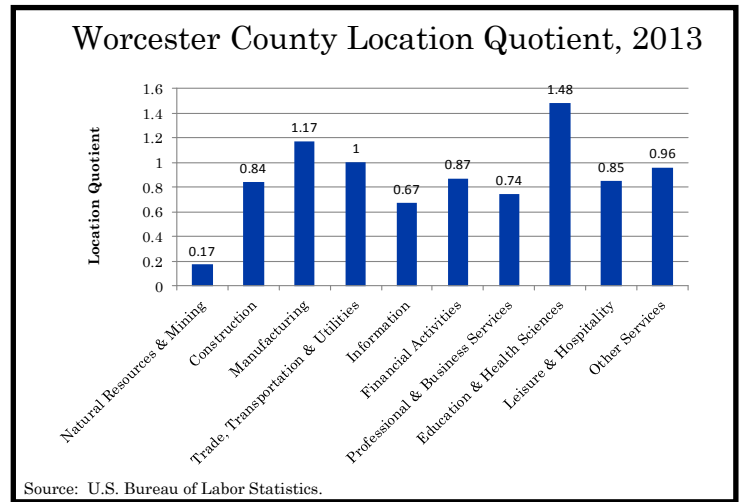
2013 Average Employment & Wages in Worcester			
Establishments	Total Wages	Average Employment	Average Weekly Wage
5,431	\$5,202,271,842	99,297	\$1,008

Source: Commonwealth of Massachusetts Executive Office of Labor & Workforce Development

City of Worcester Building Permits, 2014	
Number of Total Permits	2,569
Estimated Cost of Construction	\$144.4M

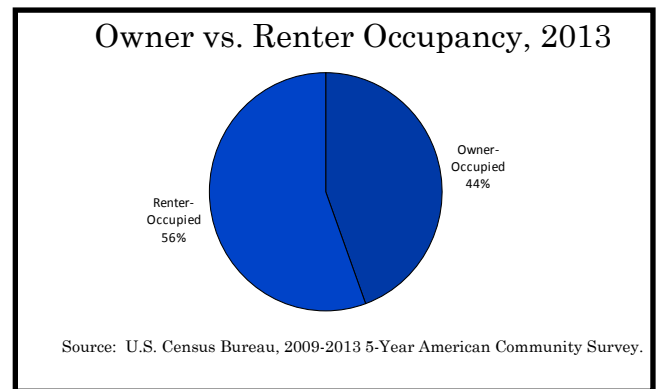
Source: City of Worcester Executive Office of Economic Development.

The location quotient (LQ) shows the distribution of employees in a particular industry and geographic region compared to the distribution of employees in that same industry in the entire United States. The national average of employees for each industry is represented by the number one. If Worcester County has more employment in a certain industry than the national average, the County number is greater than one. For example, the County's LQ of 1.48 in Education & Health Sciences means that Worcester County has 1.48 times the per capita number of employees in that field compared with the national average.



Housing in the City of Worcester, 2013	
Total Housing Units	76,723
Occupied Housing Units	68,850
Vacant Housing Units	7,873
Housing Units in Multi-Unit Structures	46,949

Source: U.S. Census Bureau, 2009-2013 5-Year American Community Survey.



% of Worcester Households Spending 30% or More of Income on Housing	
Homeownership	21.7%
Rental	51.8%

Source: U.S. Census Bureau, 2009-2013 5-Year American Community Survey.

Massachusetts Department of Housing and Community Development (DHCD) Chapter 40B Subsidized Housing Inventory—Worcester	
	Units
2010 Census Year-Round Housing Units	74,383
Subsidized Housing Units	9,971
% Subsidized Units	13.4%

Source: Massachusetts Department of Housing & Community Development. As of December 2014.

Bureau Brief

Worcester Regional Research Bureau, Inc.
500 Salisbury Street
Worcester, MA 01609
508-799-7169
www.wrrb.org



This Bureau Brief was drafted to support the City of Worcester Community Dialogues on Race held in May/June 2015.