

Worcester Youth Violence Prevention & Reduction Strategic Planning Process



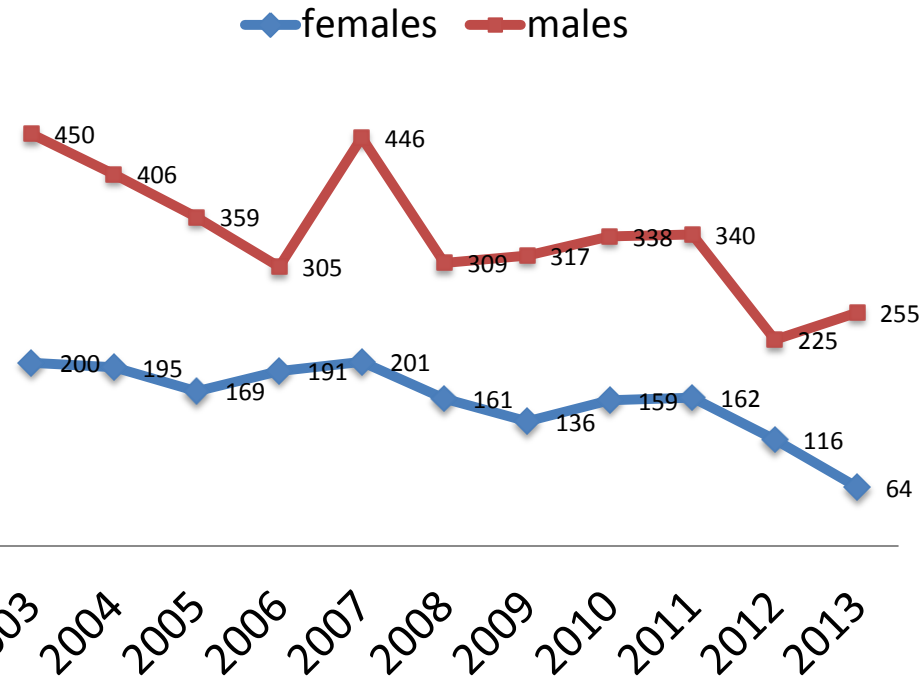
Laurie Ross
Fourth Fairman Cowan Collegiate Lecture
Clark University
4/22/15



Clark's Role

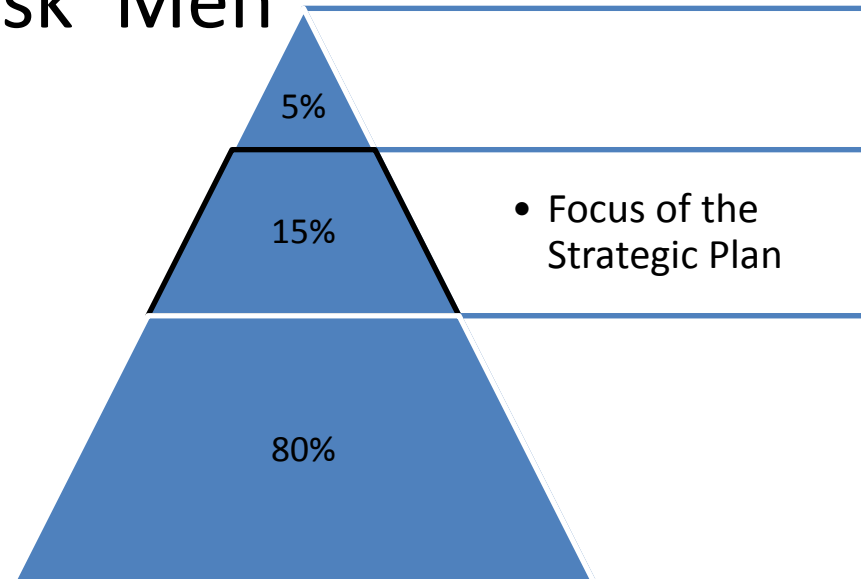
- Local Action Research Partner (Ross and Foley)
 - Charles E. Shannon Community Safety Initiative (2006-present) – Sponsored by *MA Executive Office of Public Safety and Security*
 - Safe and Successful Youth Initiative (2011-present) – Sponsored by MA Executive Office of Health and Human Services
 - Partners: City of Worcester, Worcester Police Dept, Boys and Girls Club, Iglesia Cristiana de la Comunidad, Straight Ahead Ministries, Worcester Community Action Council, Worcester Youth Center, YWCA
- Statewide Research Partner (Ross and Foley)
 - Charles E. Shannon Community Safety Initiative (2012-present)

Figure One: Worcester Juvenile Arrest 2003-2013



Why Does Violence Persist in Worcester?

- Worcester's violence map
- Patterns of violent crime hotspots, school locations, early suspensions, and location of youth development resources
- Insights about 'Proven Risk' Men

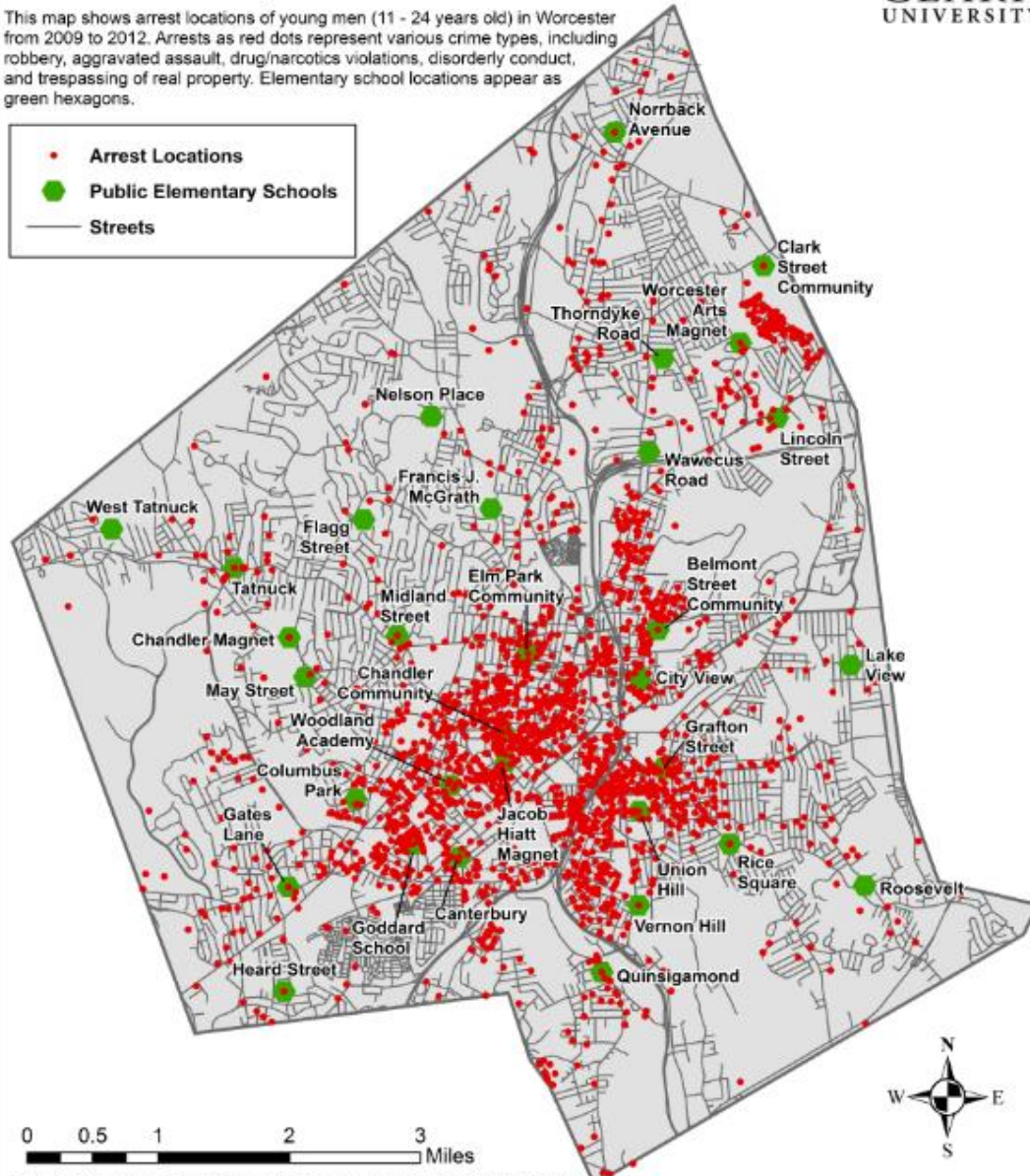


Arrest Locations and Elementary Schools in Worcester, 2009 - 2012










This map shows arrest locations of young men (11 - 24 years old) in Worcester from 2009 to 2012. Arrests as red dots represent various crime types, including robbery, aggravated assault, drug/narcotics violations, disorderly conduct, and trespassing of real property. Elementary school locations appear as green hexagons.

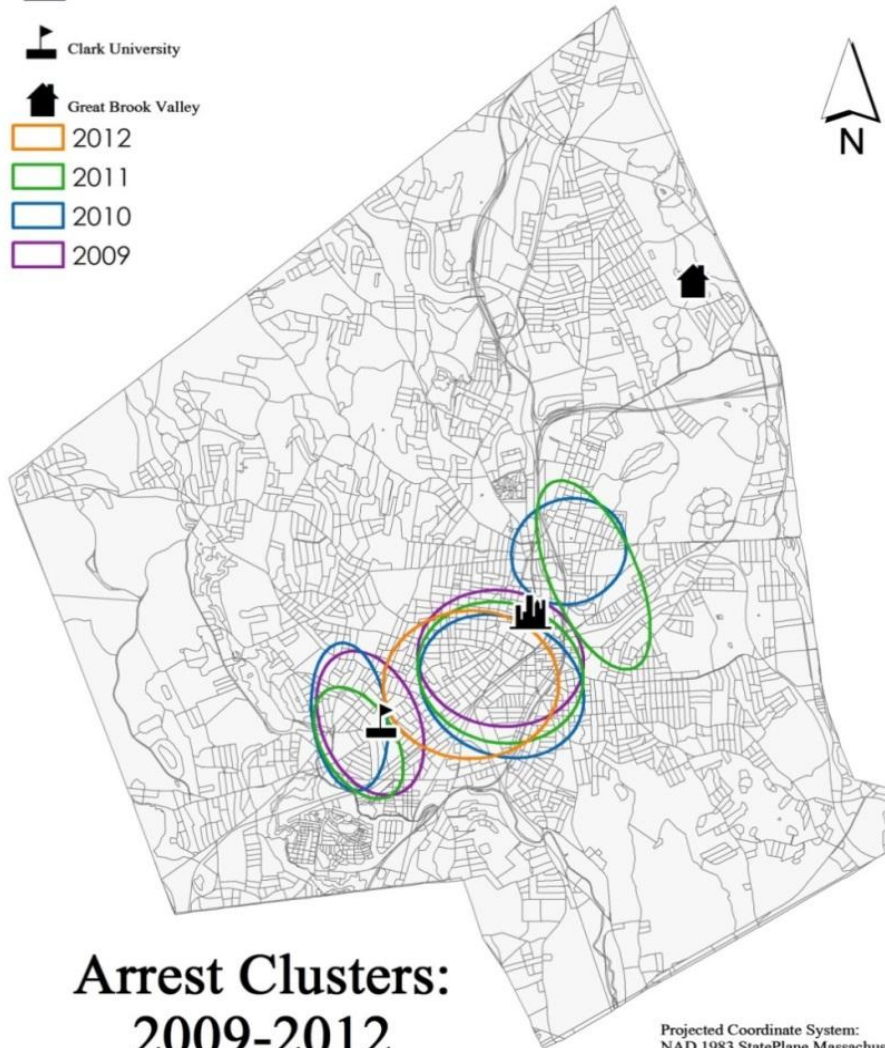
- Arrest Locations
- Public Elementary Schools
- Streets



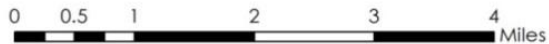
Data Sources: American Community Survey (Census Bureau) 2008-2012
Map Projection: Massachusetts StatePlane Mainland, NAD 1983

Map produced by Tim St. Onge

-  CBD
-  Clark University
-  Great Brook Valley
-  2012
-  2011
-  2010
-  2009



Arrest Clusters: 2009-2012








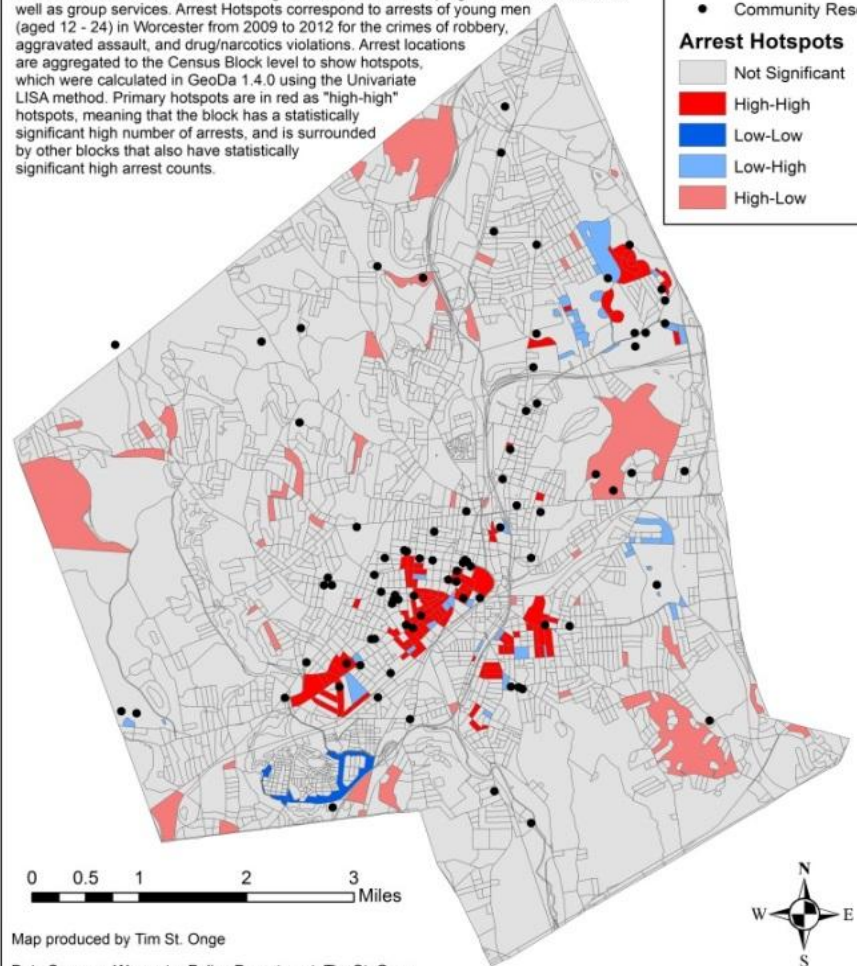
Projected Coordinate System:
NAD 1983 StatePlane Massachusetts
Mainland FIPS 2001 Feet
Data Source: U.S. Census Bureau
Created by: Michelle Andrews and
Date: 10 December 2013

Community Resources for Youth and Local Arrest Hotspots for Young Men



Community resources are defined as various nonprofits, churches, government agencies, school-based programs, and other organizations serving disadvantaged youth in Worcester. Activities include mentoring services, after-school programs, and individual as well as group services. Arrest Hotspots correspond to arrests of young men (aged 12 - 24) in Worcester from 2009 to 2012 for the crimes of robbery, aggravated assault, and drug/narcotics violations. Arrest locations are aggregated to the Census Block level to show hotspots, which were calculated in GeoDa 1.4.0 using the Univariate LISA method. Primary hotspots are in red as "high-high" hotspots, meaning that the block has a statistically significant high number of arrests, and is surrounded by other blocks that also have statistically significant high arrest counts.

- Community Resource
- Arrest Hotspots**
-  Not Significant
-  High-High
-  Low-Low
-  Low-High
-  High-Low



Map produced by Tim St. Onge

Data Sources: Worcester Police Department, Tim St. Onge
Map Projection: Massachusetts StatePlane Mainland, NAD 1983

Worcester Youth Violence Strategic Planning Process



Overarching Goals

- Promote an ethic of trust & care in the community
- Ensure equitable access to resources for health, education, activities, and employment
- Increase collaboration and break down silos
- Break cycles of violence
- Foster the emotional and physical safety of Boys, Men, Girls, and Women of Color

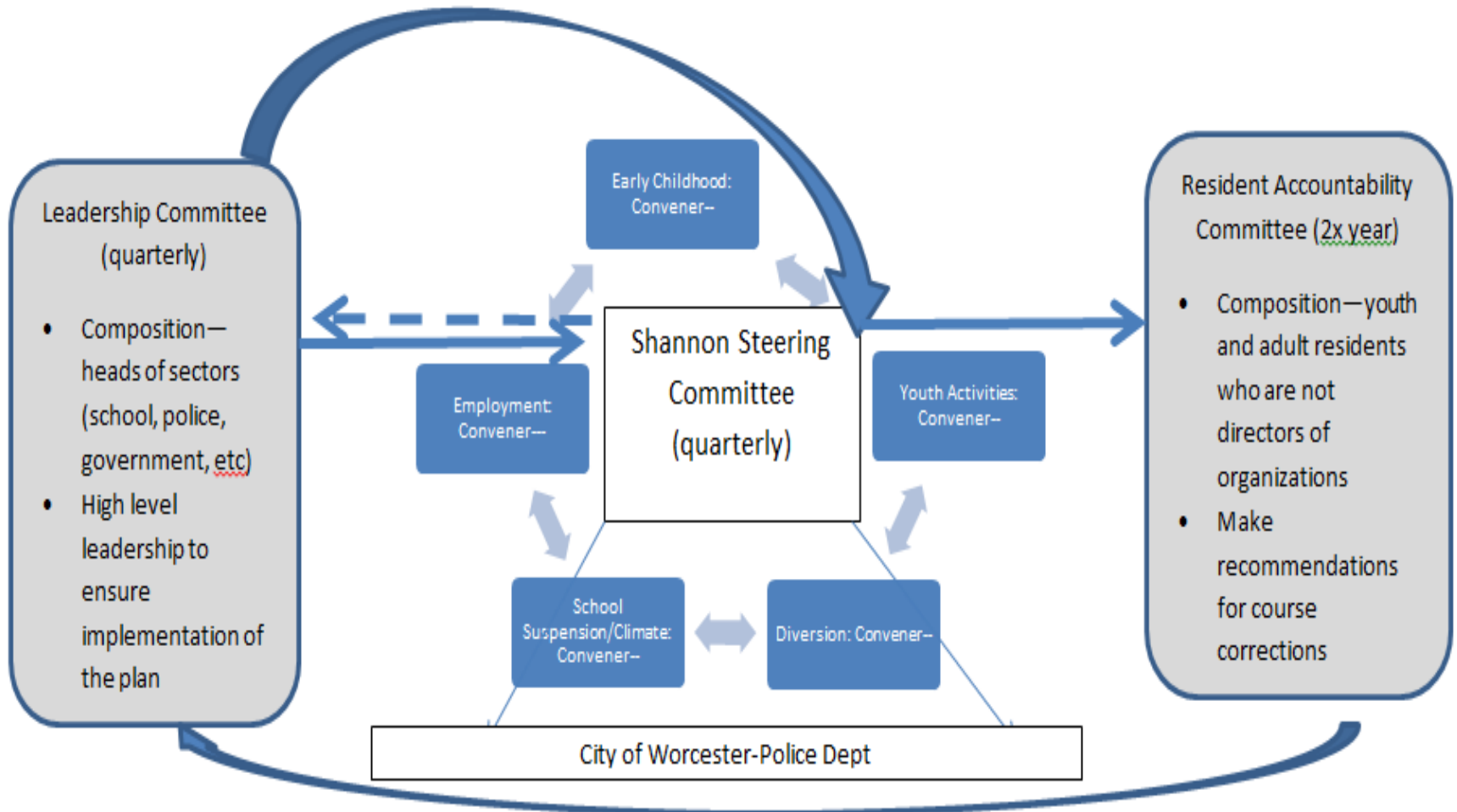
| Indicator | Where we are now | By 2020 |
|--|-------------------------------|--|
| Youth 14-24 who are victims of an aggravated assault | 31.3% (state=27.6%; SSI 28.4) | Youth aggravated assault rate equivalent to the state's |
| Juvenile arrest rate | 55% juvenile males are Latino | Juvenile arrests continue to decline; disparity reduced |
| Low-risk youth detained by DYS | 40% | 20% |
| Child maltreatment rate per 1000/Children 0-5 with police contacts as victim | 84.6 (state=56.3; SSI 84.8) | Child maltreatment rate is equivalent to the state's |
| Out-of-school suspension rate | 12.4% (state=5.4%; ssi 9.6%) | Out-of-school suspension rate equivalent to state rate and racial disparities eliminated |

Focus Areas and Strategic Goals

- Increase access to high quality, trauma-informed early education and health services for children of proven-risk/incarcerated parents.
- Reduce barriers for high-risk and proven-risk youth and young adults to community resources and services
- Reduce the number of youth being arrested and reduce the number of youth being charged and detained
- Reduce use of out-of-school suspensions in the schools
- Reduce barriers to employment for high-risk and proven-risk youth and young adults
- Develop a model for city wide, youth-centered, intentional healing conversations amongst Boys and Men of Color



Accountability Process



Ongoing Tensions

- Asset vs Deficit Approach
- Appropriate Framing for the Problem
 - Analysis of race
 - Toxic stress and resiliency
- Not the ‘what’ but the ‘who’