

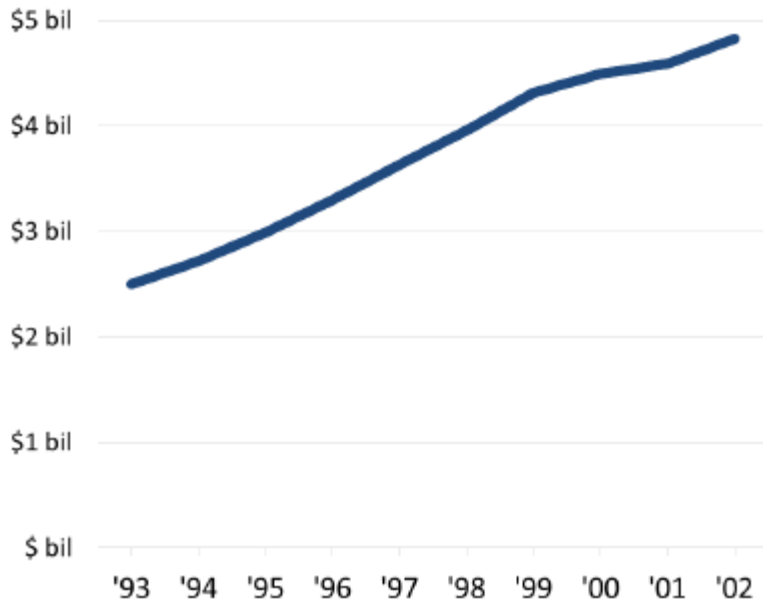
Presentation to Worcester Education Collaborative & The Research Bureau

April 6, 2016

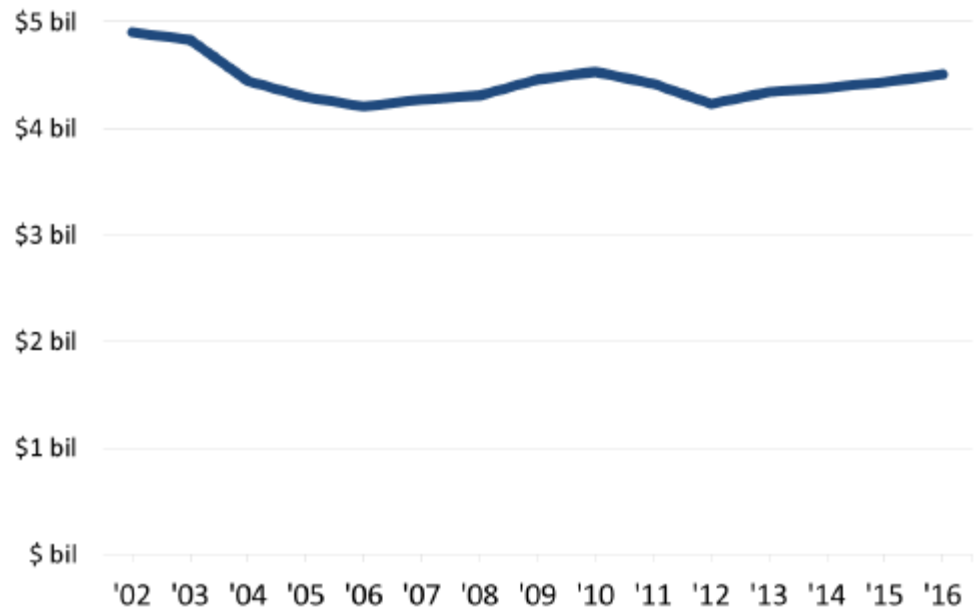
“The Every Student Succeeds Act (ESSA) & Chapter 70 Reform:
Implications for Massachusetts Education”

Funding Progress Has Eroded

Chapter 70 Aid doubled over first decade



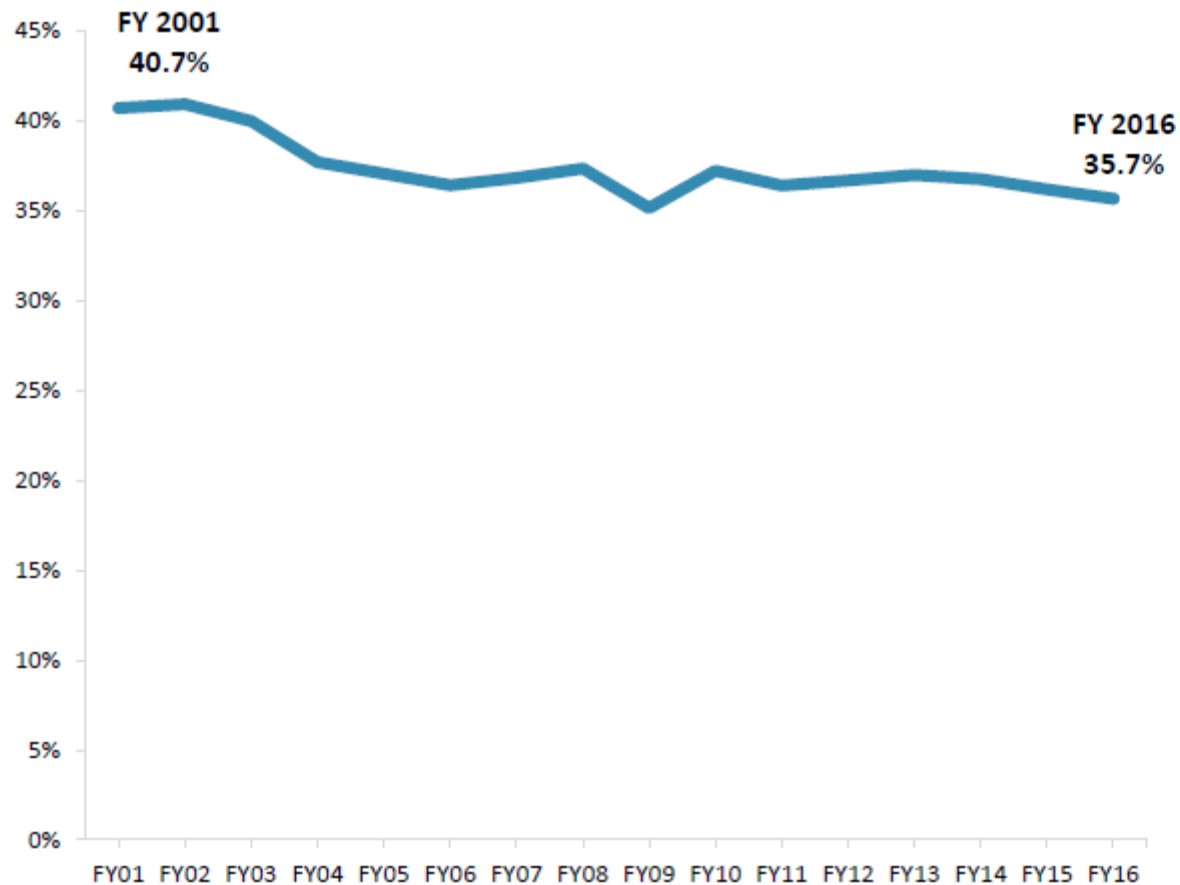
...and has been cut \$400 mil since FY 2002



Inflation adjusted using factor identified in CH70 law (Implicit Price Deflator for State and Local Government), 2015 \$

State Aid % of School Budgets Has Declined Since FY 2001

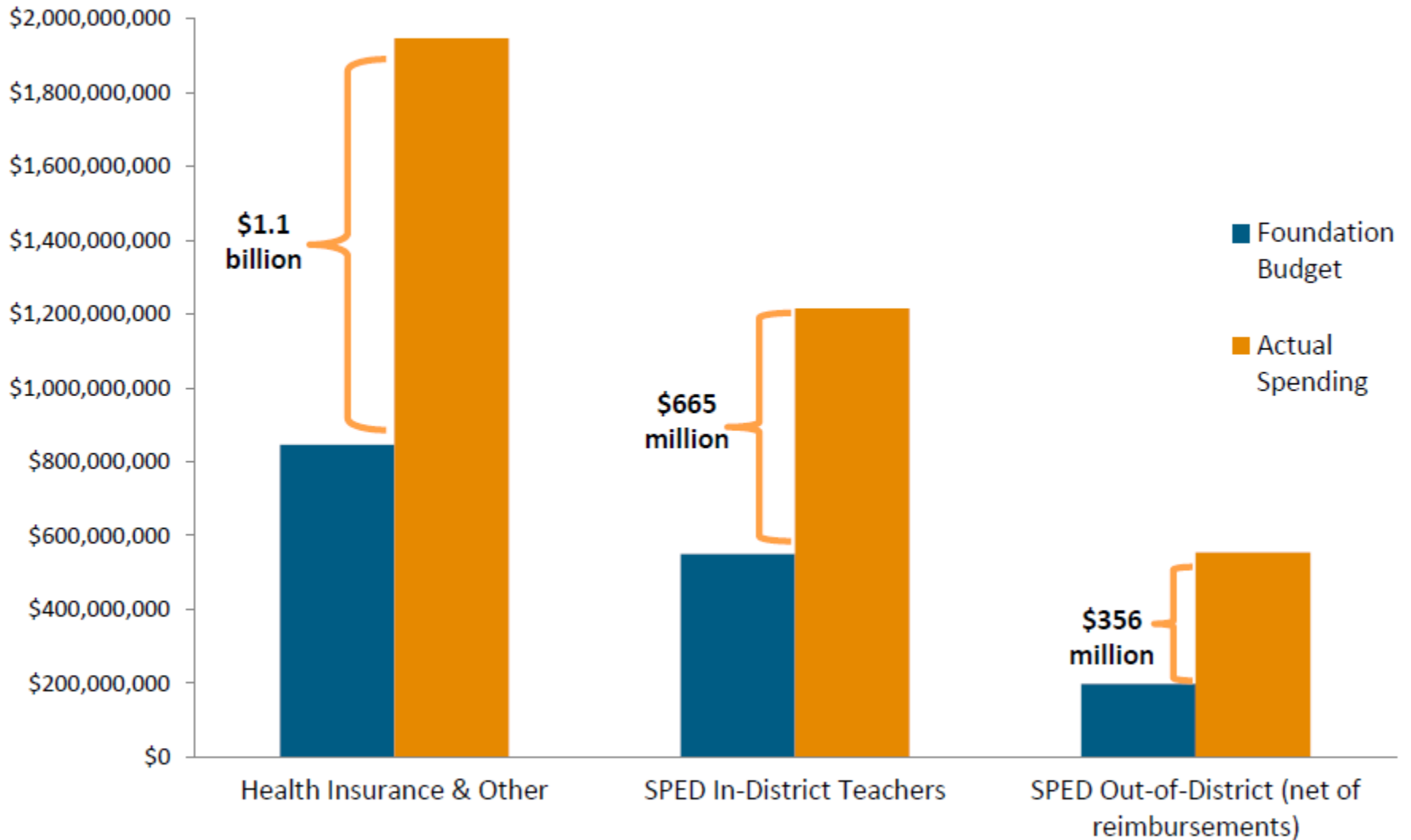
Chapter 70 Aid as Share of School Spending in MA FY 2001-FY 2016



Source: MA DESE

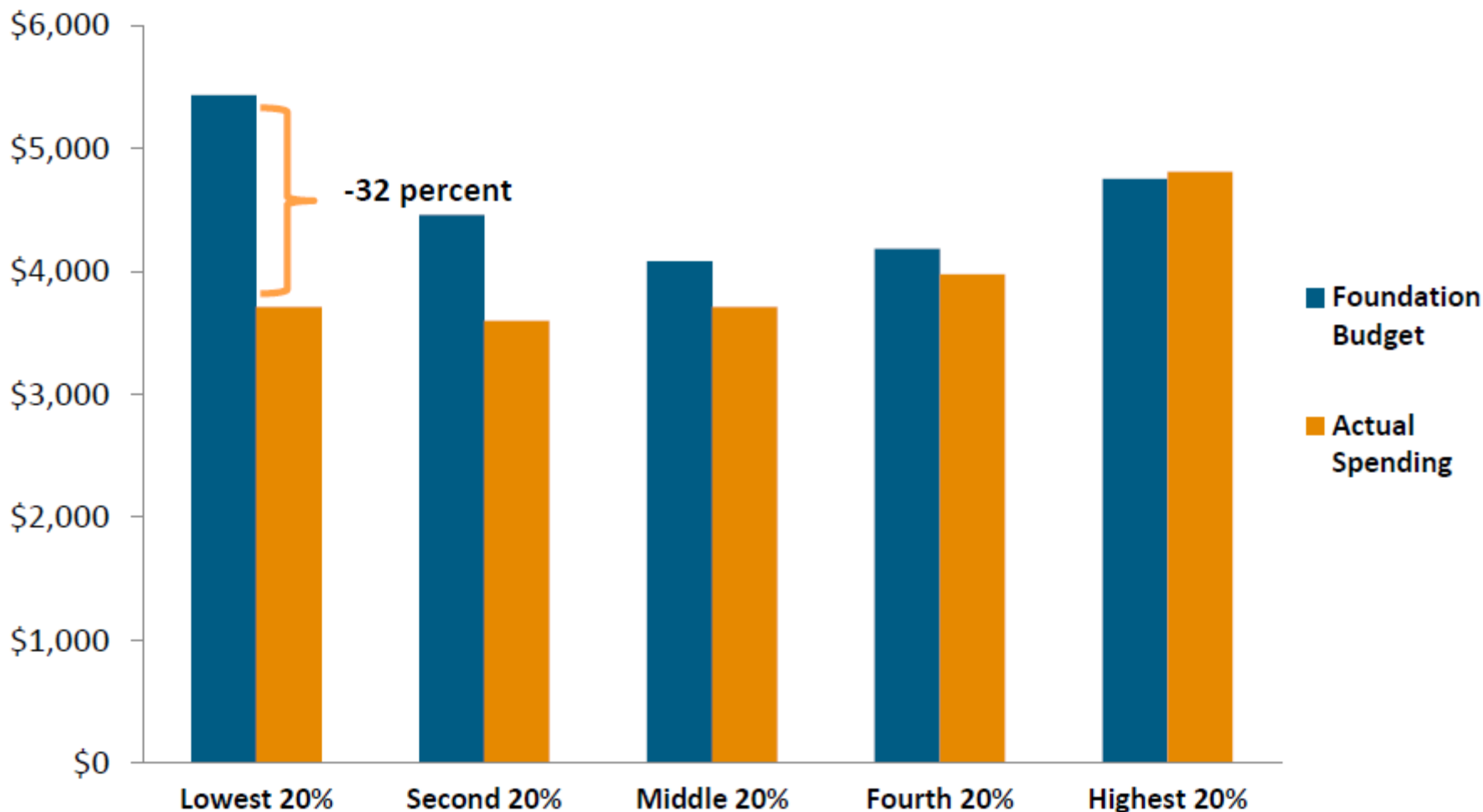
Foundation Budget Does Not Reflect Current Costs

Fiscal Year 2010



Only Highest-Wealth Districts Spend at Foundation on Regular Ed. Teachers

Districts clustered by community property wealth and income
Per pupil spending on Regular Education Teachers, FY 2010

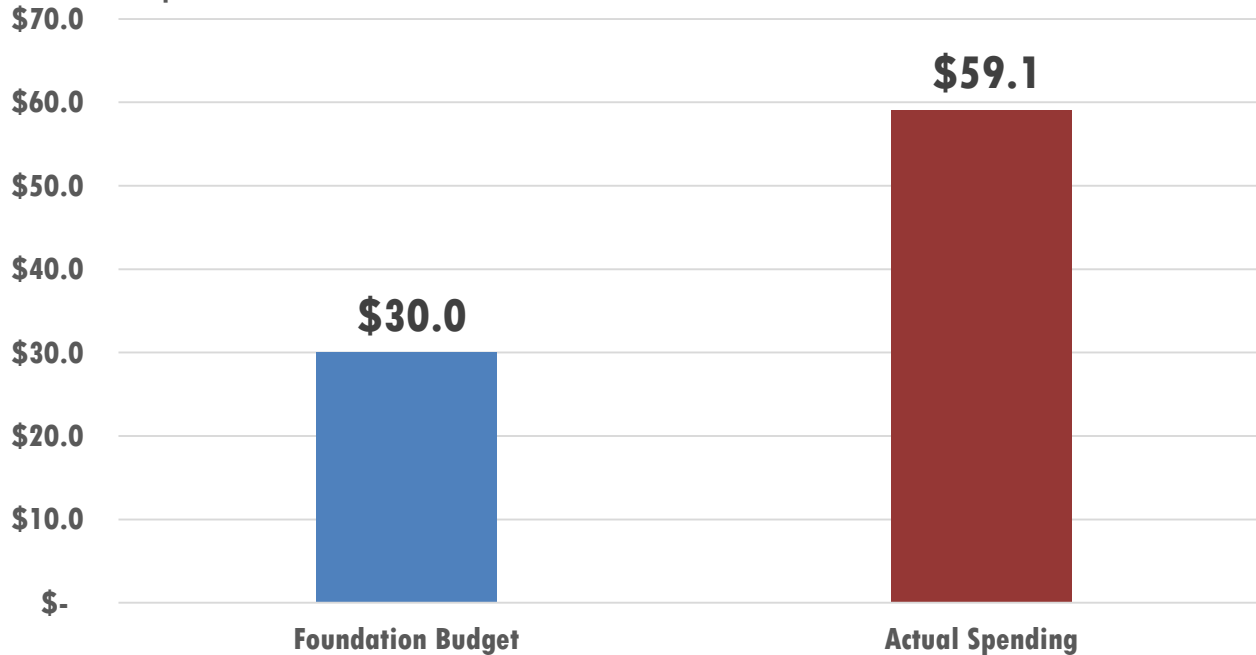


Health Insurance:

Worcester Analysis

\$29.1 million Gap

\$ in millions



Already Changed Plans

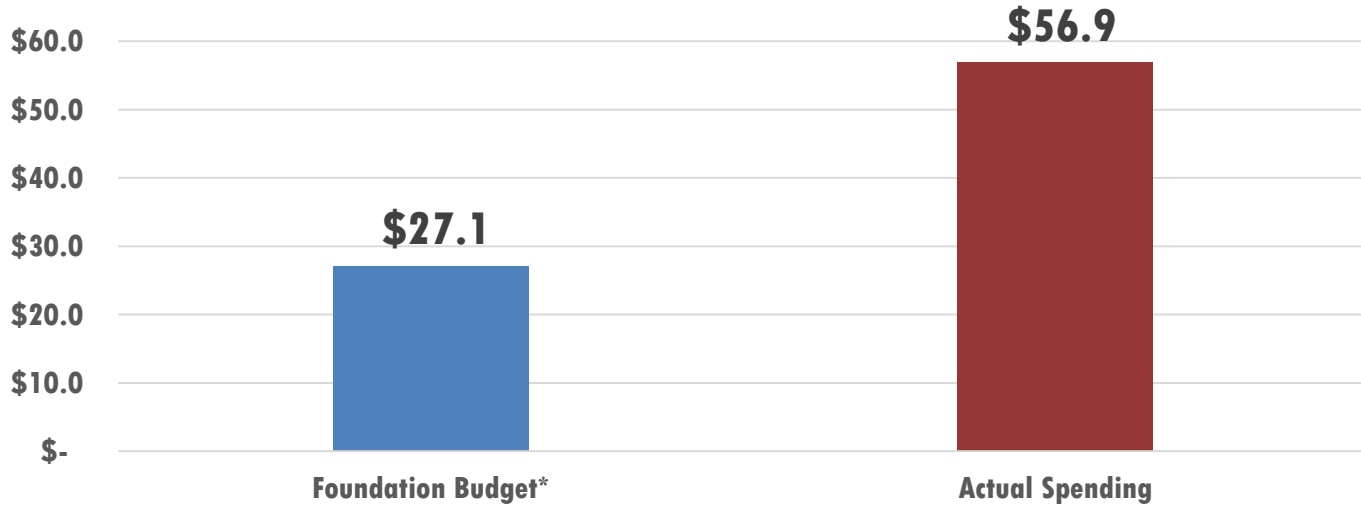
Already Changed contribution rates

Already Changed Co-Pays and Deductibles



Special Education:

\$ in millions



\$29.8 million Gap

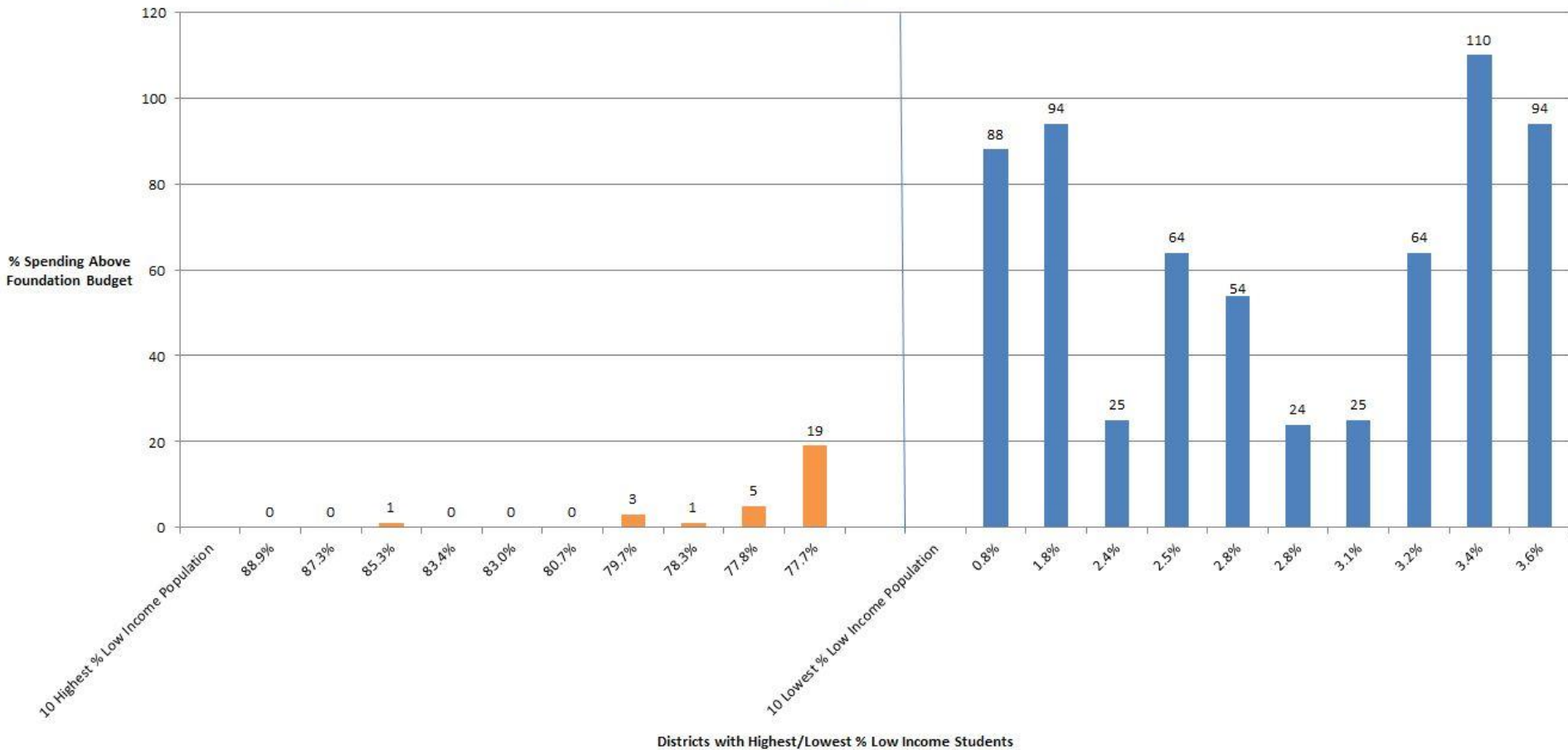
Restructured Autism Services

Low Out-of-District Placements

**High use of Lower-Cost Special Education
Collaborative Programs**

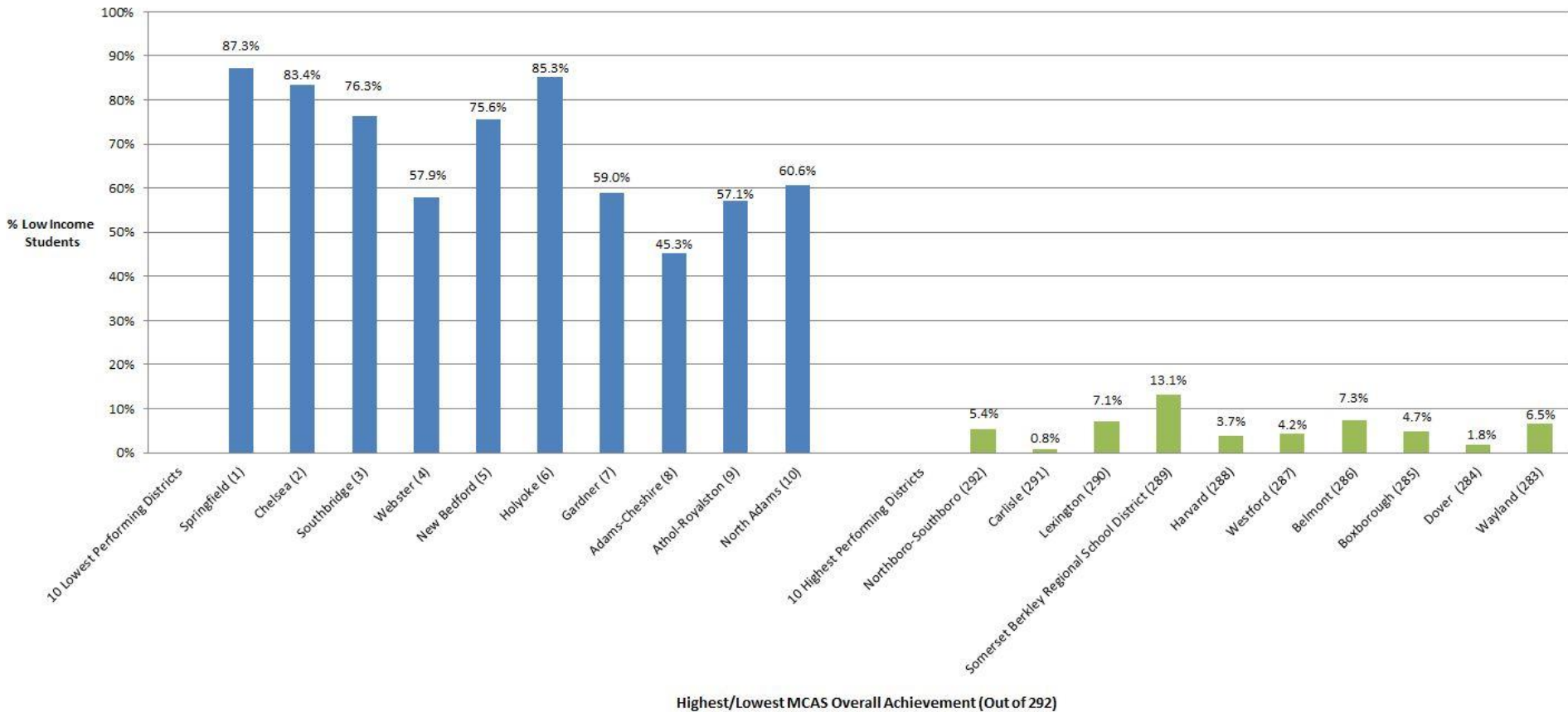
Spending v. Income

% Spending Above Foundation Budget in Districts with the Highest/Lowest % Low Income Populations (2013-2014)



Income v. Achievement

% Low Income Population in Districts with Highest/Lowest MCAS Overall Achievement (2013-2014)



And here's the correlation between spending above foundation and achievement scores.

Spending v. Achievement

% Spending Above Foundation Budget in Districts with Highest/Lowest MCAS Overall Achievement (2013-2014)

